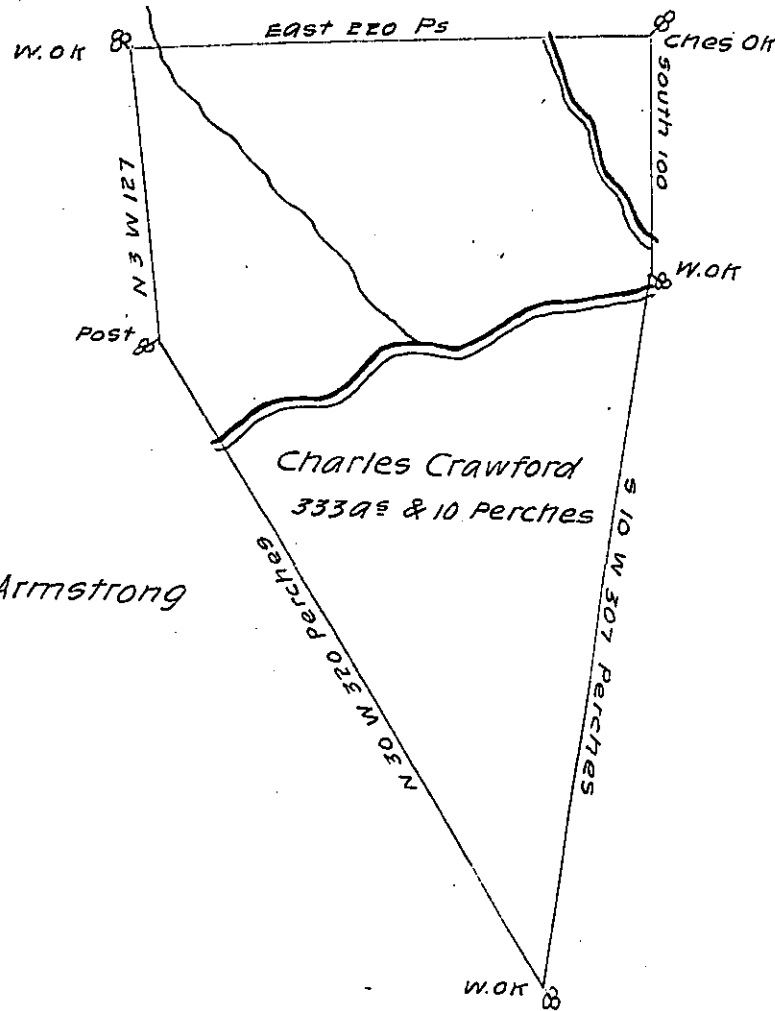


Robt Clugage



Surveyd for Jas Armstrong

Azariah McClean

Situate in Bedford County Dublin Township on Elders Branch adjoining Azariah McClean on the East Containing 333 acres & 10 perches and the usual allowance of six Per Cent for Roads Surveyed the 6th Day of Jan^y 1786 in Pursuance of a Warrant Granted to Charles Crawford Dated Sept^r 1st 1785.

George Woods D.S.

To John Lukens Esq^r S.G.

IN TESTIMONY that the above is a copy of the original remaining on file in the Department of Internal Affairs of Pennsylvania, made conformably to an Act of Assembly approved the 16th day of February, 1833, I have hereunto set my Hand and caused the Seal of said Department to be affixed at Harrisburg, this twenty-eighth day of June 1904

George P. Brown
 Secretary of Internal Affairs.